

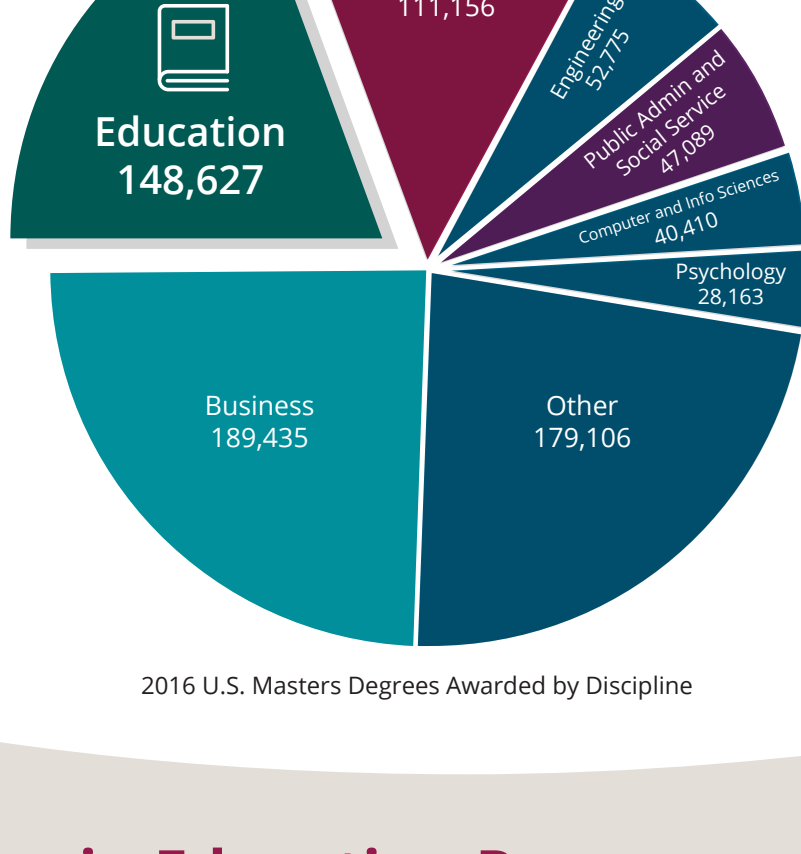


Education was the largest discipline for graduate programs as recently as 2010,

but it is now second

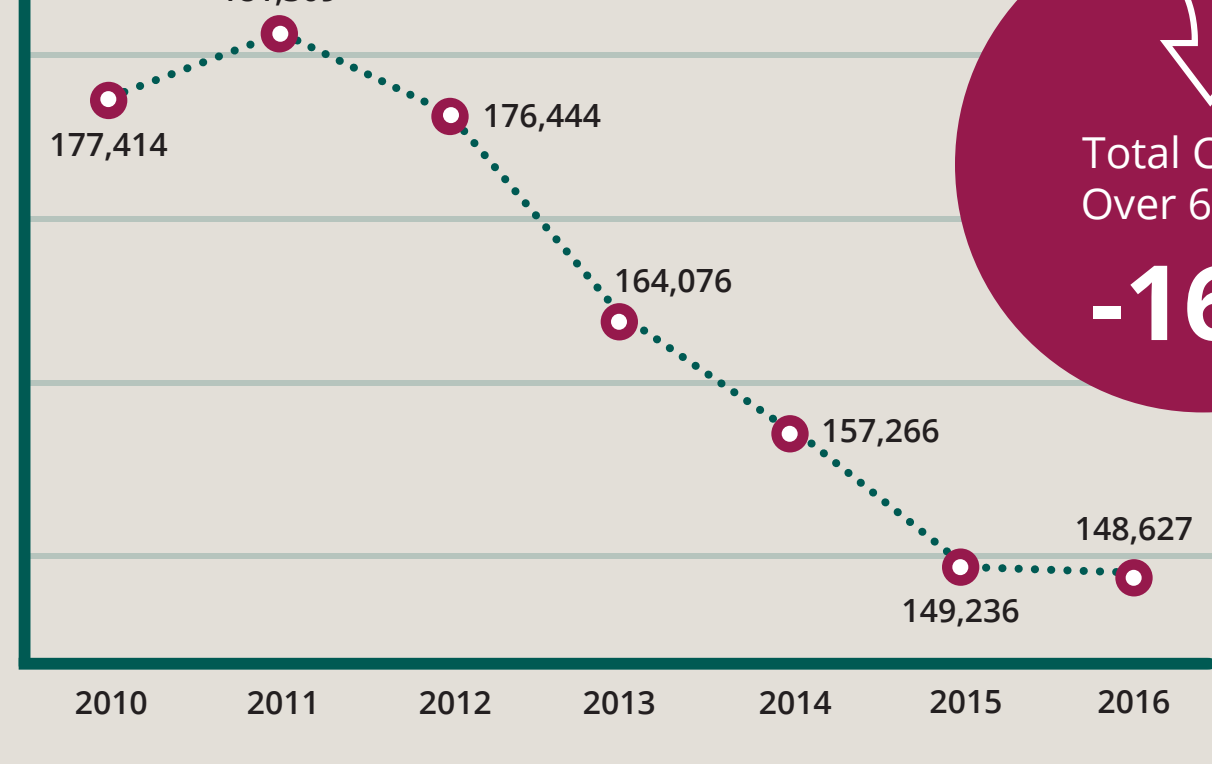
and soon will likely be eclipsed by Health.

Although it's one of the largest disciplines among graduate degrees, in recent years the number of education graduates has steadily declined. There are still opportunities for growth, but it's important institutions make informed decisions about program offerings.



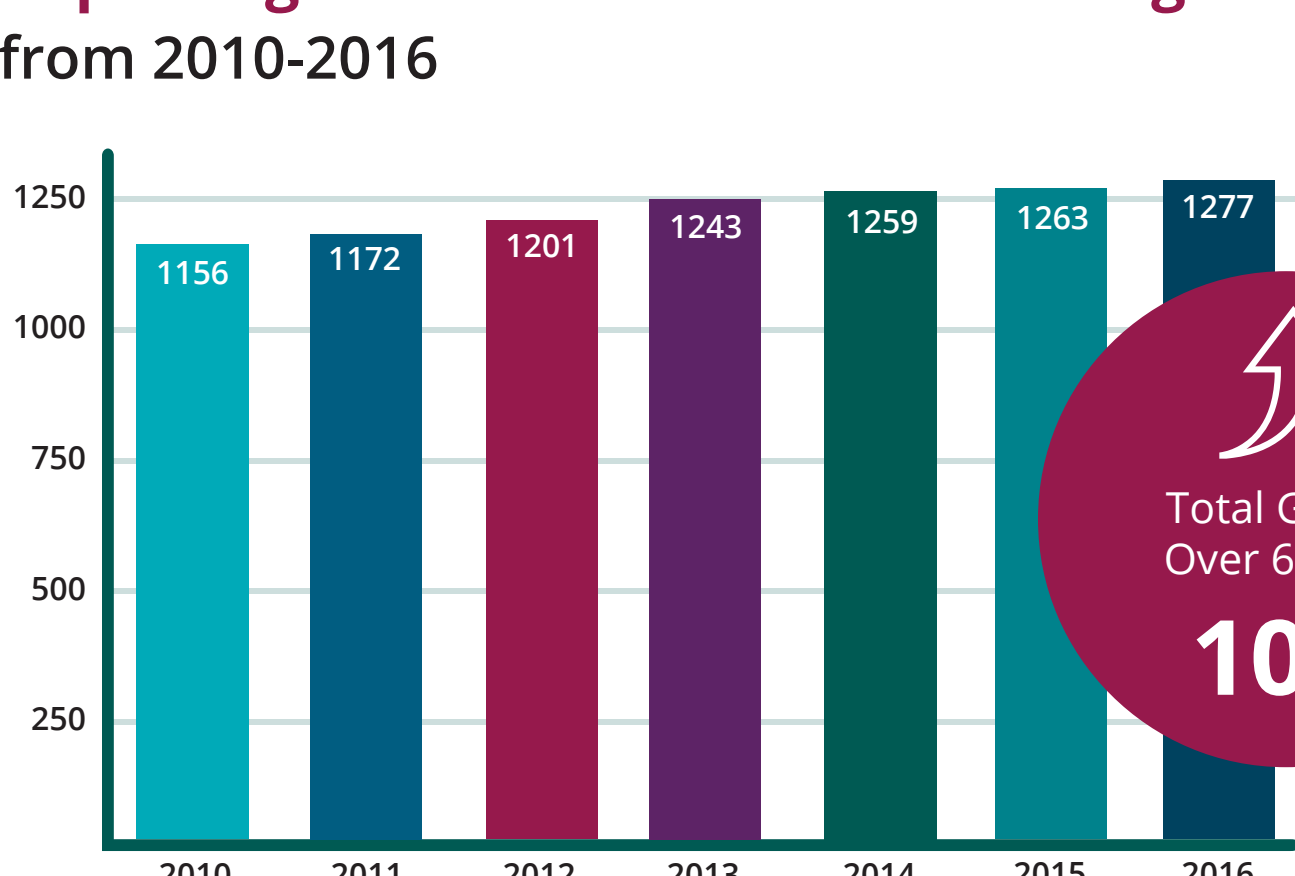
2016 U.S. Masters Degrees Awarded by Discipline

Number of Graduates in Education Programs from 2010-2016



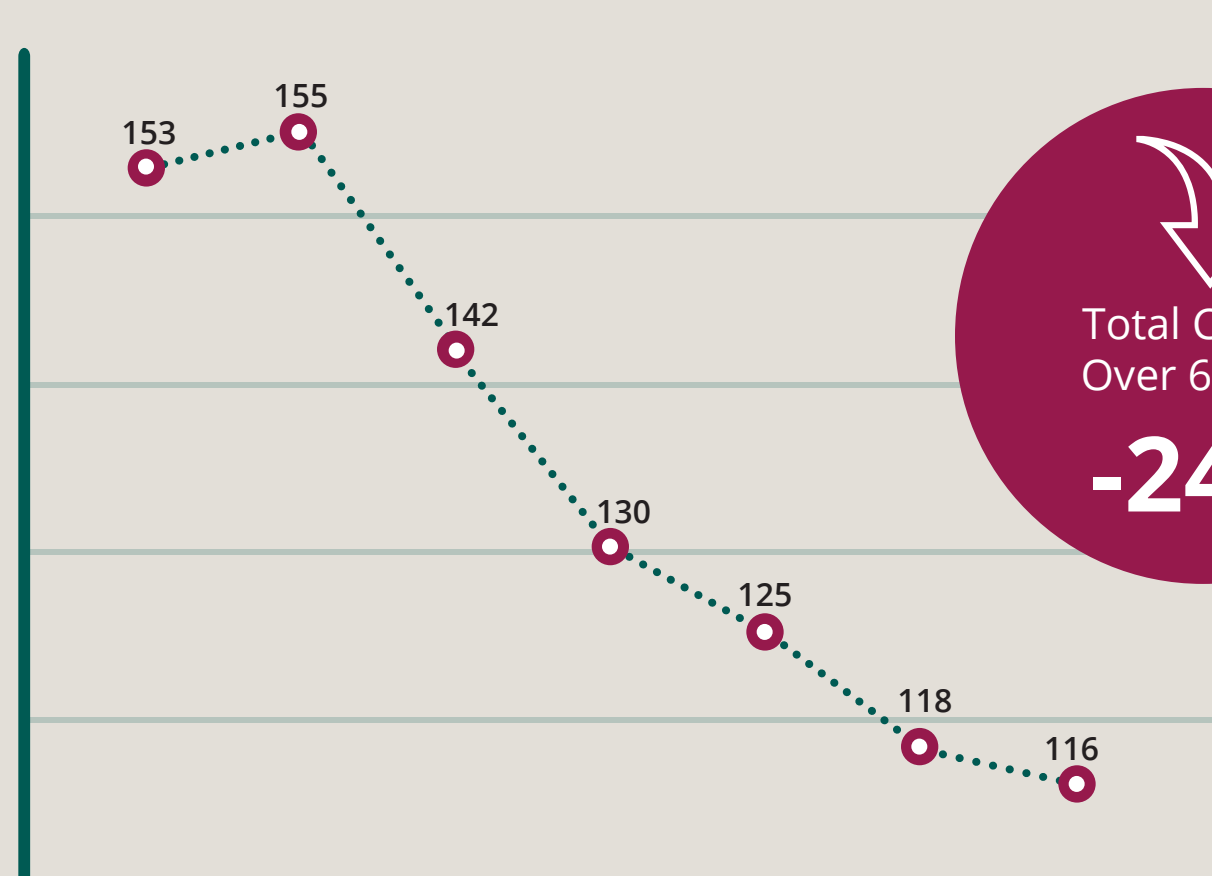
Total Change Over 6 Years:
-16%

Number of Institutions Reporting Graduates in Education Programs from 2010-2016



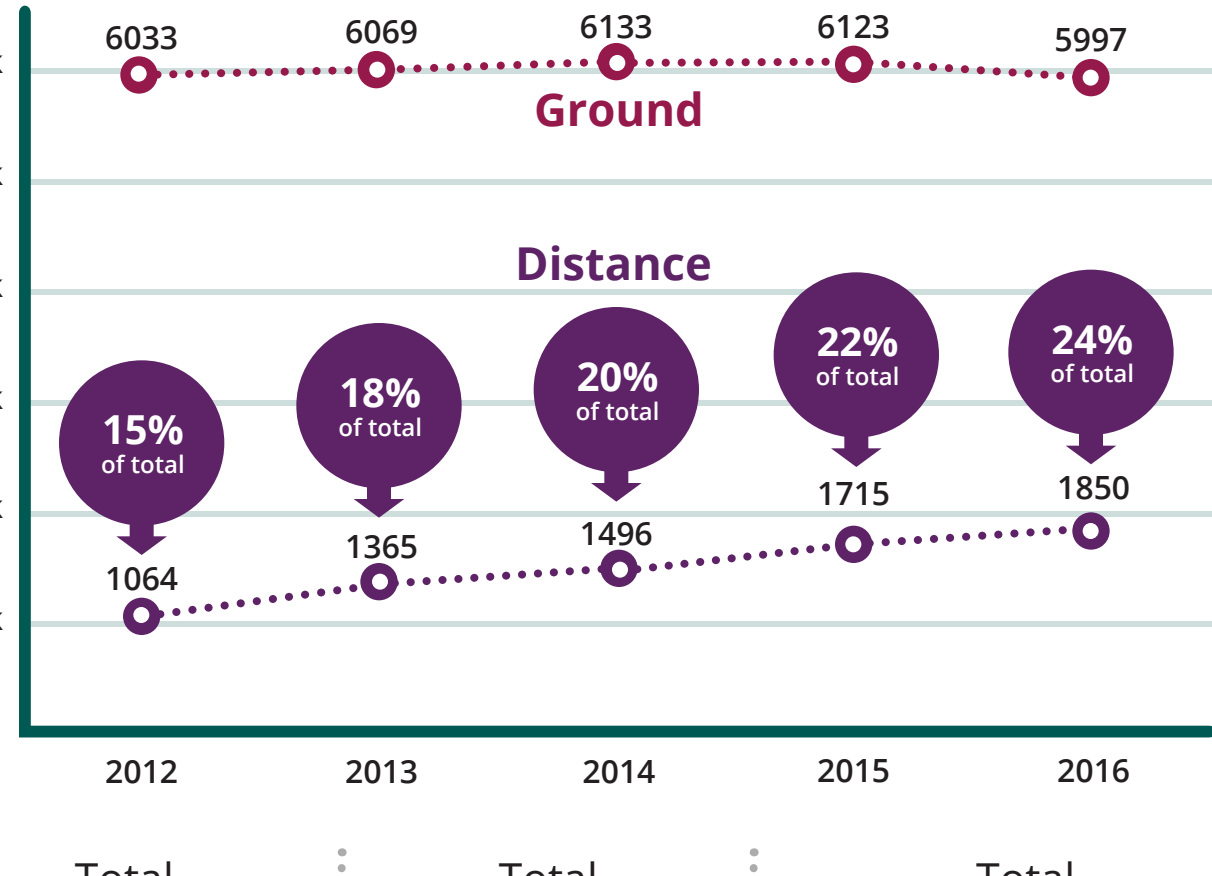
Total Growth Over 6 Years:
10%

Average Students Per Institution from 2010-2016



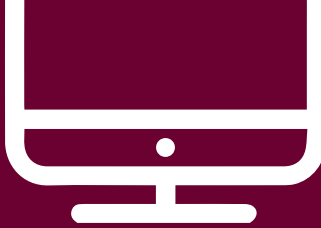
Total Change Over 6 Years:
-24%

Program Growth: Distance vs. Ground



Total Distance Growth: **74%** Total Ground Change: **-1%** Total Graduates in 2016: **148,627**

Key Trends and Takeaways



24%

of education programs are online



Competition among online education programs is growing at **15% per year**



The discipline has seen a **declining rate of graduates** (-3% per year)

At the same time, competition among programs (distance and ground) is **increasing by 2% per year**, resulting in smaller program sizes on average.

Degree Insights



Instructional Design

Very Competitive



Teaching ESL

Very Competitive



Certificates

Growth in Many Areas

GROWING



Special Education

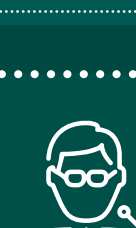
Some Areas of Growth

IN DECLINE



Curriculum and Instruction

Still a Large Market



Educational Administration

Still a Large Market

Wiley Education Services constantly analyzes the latest research to develop strategic plans for our partners. By identifying the right programs for each institution, we ensure that resources are invested wisely and that educational offerings are aligned with students' needs and market trends.

*Source: The Integrated Postsecondary Education Data System (IPEDS)